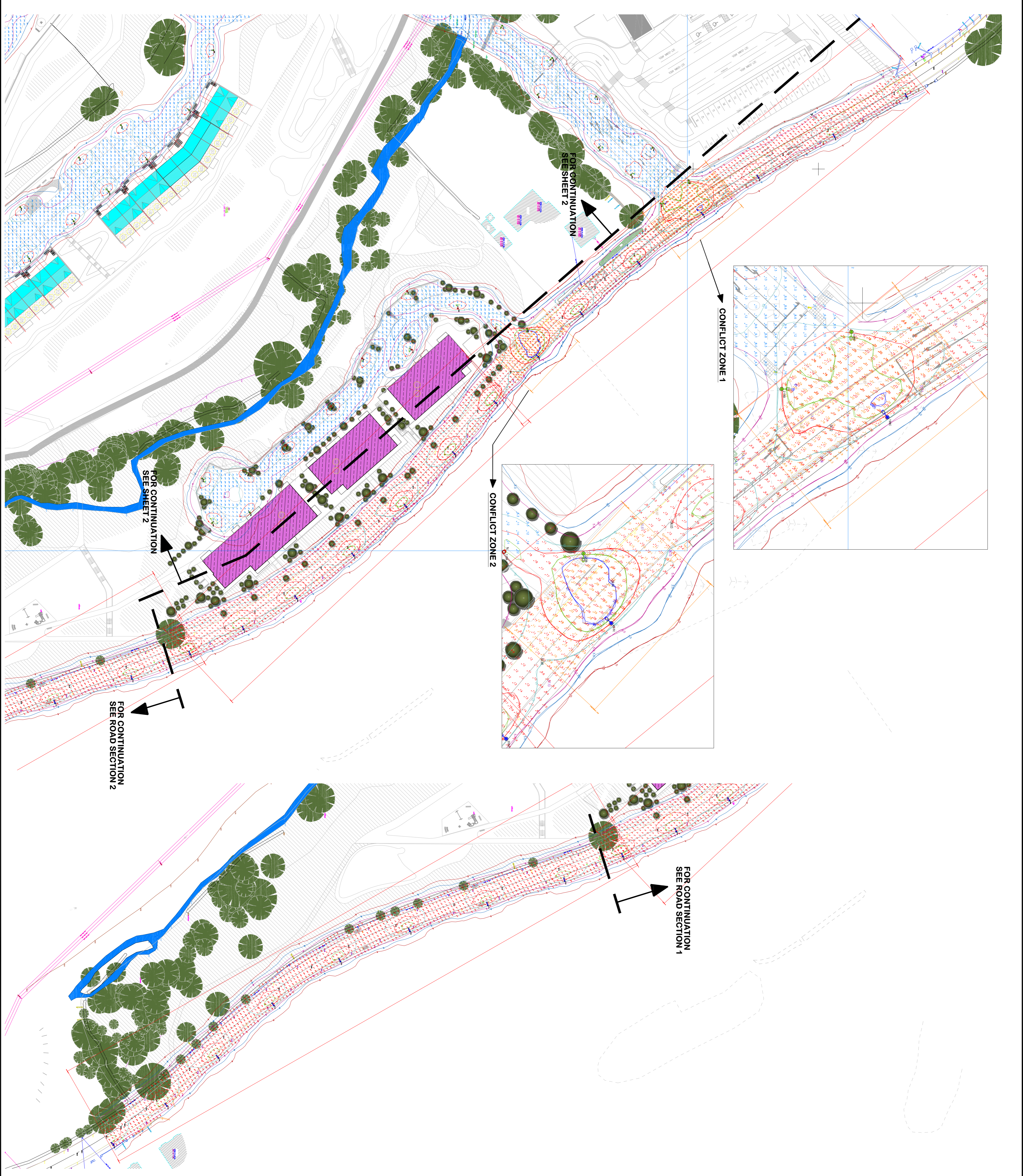


DO NOT SCALE. Use Printed Dimensions Only



**GENERAL NOTES**

1. ALL DIMENSIONS ARE GIVEN IN MILLIMETERS UNLESS OTHERWISE INDICATED.
2. THIS DRAWING IS TO BE READ IN CONJUNCTION WITH THE SCOPE OF WORKS. ANY DISCREPANCIES ARE TO BE BROUGHT TO THE ATTENTION OF KELLIHERS FOR CLARIFICATION PRIOR TO ANY WORK COMMENCING.
3. CONTRACTOR TO FIELD VERIFY ALL DIMENSIONS. DISCREPANCIES ARE TO BE NOTIFIED TO THE CONTRACTOR AND DESIGN FOR RESOLUTION.
4. ALL WORKS TO COMPLY WITH PREVIOUSLY AGREED AND ISSUED SPECIFICATIONS

**LEGEND**

- Scale 1 - Horizontal Ill. (lux)**  
 Results - Horizontal Ill. (lux)  
 Eave = 8.01  
 Eave = 10.56  
 Eave = 22.78  
 Eave/Emv = 0.07  
 Eave/Emv = 0.20
- Scale 2 - Horizontal Ill. (lux)**  
 Results - Horizontal Ill. (lux)  
 Eave = 8.89  
 Eave = 12.21  
 Eave/Emv = 0.08  
 Eave/Emv = 0.20
- Scale 3 - Horizontal Ill. (lux)**  
 Results - Horizontal Ill. (lux)  
 Eave = 16.19  
 Eave = 17.76  
 Eave/Emv = 0.25  
 Eave/Emv = 0.40
- Main road 1 horizontal Ill. (lux)**  
 Results - Horizontal Ill. (lux)  
 Eave = 12.27  
 Eave = 23.07  
 Eave/Emv = 0.09  
 Eave/Emv = 0.24
- Main road 2 horizontal Ill. (lux)**  
 Results - Horizontal Ill. (lux)  
 Eave = 2.45  
 Eave = 2.42  
 Eave/Emv = 0.10  
 Eave/Emv = 0.22
- Conflict zone 1 horizontal Ill. (lux)**  
 Results - Horizontal Ill. (lux)  
 Eave = 1.76  
 Eave = 3.18  
 Eave/Emv = 0.26  
 Eave/Emv = 0.48
- Conflict zone 2 horizontal Ill. (lux)**  
 Results - Horizontal Ill. (lux)  
 Eave = 1.76  
 Eave = 3.18  
 Eave/Emv = 0.26  
 Eave/Emv = 0.48

- Key**
- Luminaire A Column
  - Luminaire B Column
  - Luminaire C Column
  - Beam Aiming Target
  - Photometric Centre
- All Dimensions in metres
- Luminaire Data  
 Luminaire A XSPME - B - Type 210 - DY1 4K  
 Lamp SMD-SAT400 W D11 4K Wp 0.78  
 Luminaire B XSPME - B - Type 210 - DY1 4K  
 Lamp SMD-SAT400 W D11 4K Wp 0.78  
 Luminaire C XSPME - B - Type 210 - DY6 4K  
 Lamp SMD-SAT400 W D16 4K Wp 0.84

NO.	REVISION	DATE	BY	CHECKED	APPROVED
1	ISSUED FOR COUNCIL APPROVAL	26/MAR/19	DMD	GF	18/MAR/19
2	REVISED AS PER CLIENTS COMMENTS	26/MAR/19	DMD	GF	18/MAR/19
3	ISSUED FOR COUNCIL APPROVAL	26/MAR/19	DMD	GF	28/MAR/19
4	REVISED AS PER CLIENTS COMMENTS	26/MAR/19	DMD	GF	28/MAR/19
5	ISSUED FOR COUNCIL APPROVAL	26/MAR/19	DMD	GF	28/MAR/19
6	REVISED AS PER CLIENTS COMMENTS	26/MAR/19	DMD	GF	28/MAR/19
7	ISSUED FOR COUNCIL APPROVAL	26/MAR/19	DMD	GF	28/MAR/19
8	REVISED AS PER CLIENTS COMMENTS	26/MAR/19	DMD	GF	28/MAR/19
9	ISSUED FOR COUNCIL APPROVAL	26/MAR/19	DMD	GF	28/MAR/19
10	REVISED AS PER CLIENTS COMMENTS	26/MAR/19	DMD	GF	28/MAR/19
11	ISSUED FOR COUNCIL APPROVAL	26/MAR/19	DMD	GF	28/MAR/19
12	REVISED AS PER CLIENTS COMMENTS	26/MAR/19	DMD	GF	28/MAR/19
13	ISSUED FOR COUNCIL APPROVAL	26/MAR/19	DMD	GF	28/MAR/19
14	REVISED AS PER CLIENTS COMMENTS	26/MAR/19	DMD	GF	28/MAR/19
15	ISSUED FOR COUNCIL APPROVAL	26/MAR/19	DMD	GF	28/MAR/19
16	REVISED AS PER CLIENTS COMMENTS	26/MAR/19	DMD	GF	28/MAR/19
17	ISSUED FOR COUNCIL APPROVAL	26/MAR/19	DMD	GF	28/MAR/19
18	REVISED AS PER CLIENTS COMMENTS	26/MAR/19	DMD	GF	28/MAR/19
19	ISSUED FOR COUNCIL APPROVAL	26/MAR/19	DMD	GF	28/MAR/19
20	REVISED AS PER CLIENTS COMMENTS	26/MAR/19	DMD	GF	28/MAR/19
21	ISSUED FOR COUNCIL APPROVAL	26/MAR/19	DMD	GF	28/MAR/19
22	REVISED AS PER CLIENTS COMMENTS	26/MAR/19	DMD	GF	28/MAR/19
23	ISSUED FOR COUNCIL APPROVAL	26/MAR/19	DMD	GF	28/MAR/19
24	REVISED AS PER CLIENTS COMMENTS	26/MAR/19	DMD	GF	28/MAR/19
25	ISSUED FOR COUNCIL APPROVAL	26/MAR/19	DMD	GF	28/MAR/19
26	REVISED AS PER CLIENTS COMMENTS	26/MAR/19	DMD	GF	28/MAR/19
27	ISSUED FOR COUNCIL APPROVAL	26/MAR/19	DMD	GF	28/MAR/19
28	REVISED AS PER CLIENTS COMMENTS	26/MAR/19	DMD	GF	28/MAR/19
29	ISSUED FOR COUNCIL APPROVAL	26/MAR/19	DMD	GF	28/MAR/19
30	REVISED AS PER CLIENTS COMMENTS	26/MAR/19	DMD	GF	28/MAR/19
31	ISSUED FOR COUNCIL APPROVAL	26/MAR/19	DMD	GF	28/MAR/19
32	REVISED AS PER CLIENTS COMMENTS	26/MAR/19	DMD	GF	28/MAR/19
33	ISSUED FOR COUNCIL APPROVAL	26/MAR/19	DMD	GF	28/MAR/19
34	REVISED AS PER CLIENTS COMMENTS	26/MAR/19	DMD	GF	28/MAR/19
35	ISSUED FOR COUNCIL APPROVAL	26/MAR/19	DMD	GF	28/MAR/19
36	REVISED AS PER CLIENTS COMMENTS	26/MAR/19	DMD	GF	28/MAR/19
37	ISSUED FOR COUNCIL APPROVAL	26/MAR/19	DMD	GF	28/MAR/19
38	REVISED AS PER CLIENTS COMMENTS	26/MAR/19	DMD	GF	28/MAR/19
39	ISSUED FOR COUNCIL APPROVAL	26/MAR/19	DMD	GF	28/MAR/19
40	REVISED AS PER CLIENTS COMMENTS	26/MAR/19	DMD	GF	28/MAR/19
41	ISSUED FOR COUNCIL APPROVAL	26/MAR/19	DMD	GF	28/MAR/19
42	REVISED AS PER CLIENTS COMMENTS	26/MAR/19	DMD	GF	28/MAR/19
43	ISSUED FOR COUNCIL APPROVAL	26/MAR/19	DMD	GF	28/MAR/19
44	REVISED AS PER CLIENTS COMMENTS	26/MAR/19	DMD	GF	28/MAR/19
45	ISSUED FOR COUNCIL APPROVAL	26/MAR/19	DMD	GF	28/MAR/19
46	REVISED AS PER CLIENTS COMMENTS	26/MAR/19	DMD	GF	28/MAR/19
47	ISSUED FOR COUNCIL APPROVAL	26/MAR/19	DMD	GF	28/MAR/19
48	REVISED AS PER CLIENTS COMMENTS	26/MAR/19	DMD	GF	28/MAR/19
49	ISSUED FOR COUNCIL APPROVAL	26/MAR/19	DMD	GF	28/MAR/19
50	REVISED AS PER CLIENTS COMMENTS	26/MAR/19	DMD	GF	28/MAR/19

PROJECT: CASTLETREASURE RESIDENTIAL  
 SUPPLIER: ASTROTEK LIGHTING LTD.  
 150 BUSINESS PARK,  
 DUBLIN 12

CASTLETREASURE RESIDENTIAL  
 COUNTY CORK  
 LIGHTING LAYOUT SHEET 3 OF 3  
 CREE LED

DATE: 26/MAR/19  
 DRAWN BY: DMD  
 CHECKED BY: GF  
 APPROVED BY: KE/CRC/01

SCALE: 1/500 @ A0  
 SHEET NO: 3 OF 3